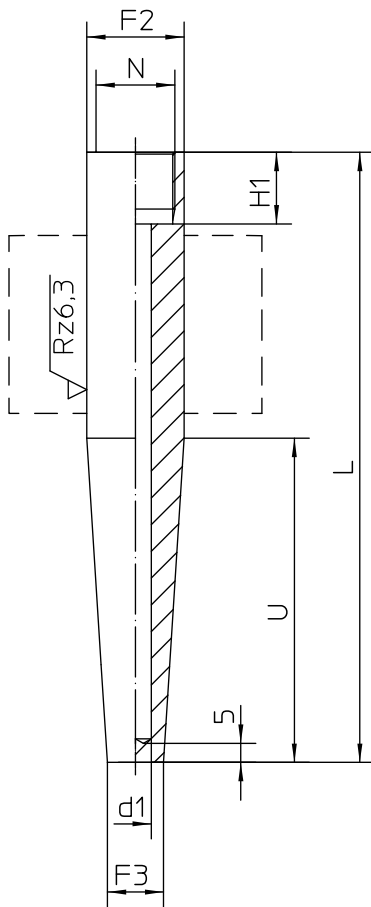


Thermowell weld-in type per DIN 43772, form 4, solid drilled, female thread, Type series HB8010



Materials

	material-no.	T max.	P max.*
stainless steel	1.4571	550°C	150 bar
stainless steel	1.4404	550°C	150 bar
tempering steel	C 22.8	450°C	150 bar
heat-resistant steel 13CrMo44	1.7335	500°C	150 bar

* static conditions of use

Other materials upon request.

The thermowells are available with material certificate per DIN EN 10204-3.1 and are suitable for connection to Zone 0 according to the technical instruction TA_033.

Upon request a calculation for thermowells can be made (for static or dynamic application) with certificate.

Length L1 of the temperature detecting element (dial indicating thermometers)

screwed plug, rotating, internal gasket $L1 = L - A$

screwed plug, fixed, external gasket $L2 = L - B$

DIN-lengths of the thermowells

(pls specify deviating lengths)

L mm	U mm
110	65
110	73
140	65
170	133
200	65
200	125
260	125
410	275

Order details

Weld-in thermowell per DIN 43772, form 4, solid drilled, female thread, Type series HB8010

Order code HB8010								
HB8010 Weld-in thermowell per DIN 43772 for thermometers with female thread								
		bore hole Ø d1	male Ø F2	Instrument screw threads N	Ø F3	H1	A	B
A10	thermowell form 4	7	24 h 7	M 18 x 1,5	12,5	16	30	10
A20		7	26 h 7	G 1/2	12,5	19	30	10
A21 *		9			15			
A30		11	32 h 11	G 3/4	17	22	30	10
A31		13			19			
A32		14			20			
A99		pls specify						
G10	material	stainless steel 1.4571 (standard)						
G11		stainless steel 1.4404						
G20		tempering steel C 22.8						
G30		heat-resistant steel 13CrMo44						
G99		pls specify						

additional features (to be indicated in case of need, only):	
W1220	combined pressure and leak test (pls specify test pressure)
W1020	material certificate per DIN EN 10204 -3.1
W2502	suitable for connection to Zone 0 acc. to TA_033

Order code (example): HB8010 – A10 – G10 – L= - U= - ...
(length L and U pls specify in mm; max. 770 mm)

* delivered ex stock (with material certificate, too)					
	thermowell	bore hole Ø d1	male Ø F2	Instrument screw threads N	Ø F3
HB8010 - A21 - G10 - L=110 - U=65	form 4	9	26 h 7	G 1/2	15
HB8010 - A21 - G10 - L=170 - U=133	form 4	9	26 h 7	G 1/2	15